

If You Fail, Never Give Up Because Fail Means "FIRST ATTEMPT IN LEARNING."
DR. APJ ABDUL KALAM

TARAKESWAR DEGREE COLLEGE

Govt. Aided

Affiliated to the University of Burdwan
Recognised under Section 2F & 12B of the UGC

Estd. - 1986



Prospectus

Session : 2022-23

**For B.A./ B.Com/ B.Sc/ B.B.A.(H)
General & Honours Courses
Help Desk : 8016016726**

Mission

From Quality Awareness
To Quality Assurance
To Quality Sustenance

Our Vission

Dissemination of learning among all members of the society
across narrow barriers of Caste, Creed and Religion and
also among the economically challenged.

Retrospect

Tarakeswar Degree College is a relatively new college as compared to other colleges in the neighbourhood. It was established thirty five years ago on 5th September-1986, a day celebrated as the Teacher's Day in memory of Dr. Sarbapally Radhakrishnan, a renowned Indian philosopher and educationist. Our Silver Jubilee Year's Celebration was observed through various academic activities and cultural programmes in 2011.

Tarakeswar is situated in the rural hinterland of Hooghly district in West Bengal. It is about 60 Kms away from the city of Kolkata. It is a well known place of pilgrimage for the devotees of Lord Shiva. The place Tarakeswar owes its name to Lord Taraknath, its presiding deity. The extension of the railway track from Sheoraphully to Tarakeswar in the year 1884 facilitated the influx of pilgrims to this place and thereby heightened the popularity of Tarakeswar. It is well-connected by both bus and train with various places of West Bengal.

The Hooghly district, pre-dominantly, has an agro-based economy. The students coming to this college hail from families with agricultural background. There are even first generation learners and it is a challenge to impart knowledge to them.

However, the apparent drawbacks did not deter the visionary forefathers of this Institution from laying its foundation. They worked relentlessly to transform their dream into reality, to enlighten and ignite the minds of a large section of uneducated off-springs of peasant families. The tireless efforts of a group of people who were concerned about the deplorable lack of higher educational facilities in and around Tarakeswar made it possible to form a preparatory committee with the following members:

(1) Sri Sabyasachi Sen. D.M.. Hooghly (President), (2) Late Kenaram Bhowmik (Secretary), (3) Sri Srimat Dandi Swami Hrishikesh Ashram Mahanta Maharaj, Tarakeswar Math, (4) Late Anil Basu, M.P, (5) Late Narandranath Mukherjee, (6) Late Kashinath Ghosh, (7) Late Nityagopal Pal, (8) Late Sadan Chandra Ghosh (9) Late Ramsingh Pal, (10) Sri Tushar Kanti Pal, (11) Sri Partha Banerjee, (12) Late Krishna Ch. Samanta (13) Late Arjun Krishna Bera, (14) Late Bimalendu Mazumder, (15) Sri Ajit Kumar Ghosh, (16) Sri Swapan Kumar Samanta, (17) Sri Tarak Prasad Banerjee, (18) Late Jagannath Kheto, (19) Sri Kartick Ch. Majhi, (20) Late Krishna Mohan Das, (21) Late Biren Dutta, (22) Sm Mira Roy, and (23) Sri Dipak Banerjee.

His Holiness Sri Srimat Dandiswami Hrishikesh Ashram Mahanta Maharaj of Tarakeswar Math with his kindness and generosity donated 3.5 acres of prime land for the purpose of establishing the college campus.

Kind support from the Hon'ble Member of Parliament, Sri Anil Basu, and Hon'ble Minister of Fire & Emergency Services Department, Govt, of West Bengal, Late Pratim Chatterjee, Sri Shankar Ray Chowdhury, Ex-General of Army & Member of Rajya Sabha, who made liberal contributions from their Local Area Development Funds, became instrumental in shaping the college. The spontaneous help of the rank and file of Tarakeswar and the surrounding villages, the active co-operation of Tarakeswar Municipality and new mass oriented higher education policy of West Bengal Government combined to bring this centre of learning into existence.

The college never boasts of being a centre of excellence but it has definitely served as a nodal college in this region. In recognition of the above and of its potential to excel as a centre of learning the college was recognised under Section 2F & 12B of the UGC on January 24,1991. Despite several odds, the college has made conspicuous progress in terms of physical expansion, diversification of the subject combinations and number of students getting enrolled.

The college started its journey with six departments (Pass), having only 37 students. Today we have more than 4500 students pursuing both General and Honours curriculum in as many as twenty departments.

The College is Growing

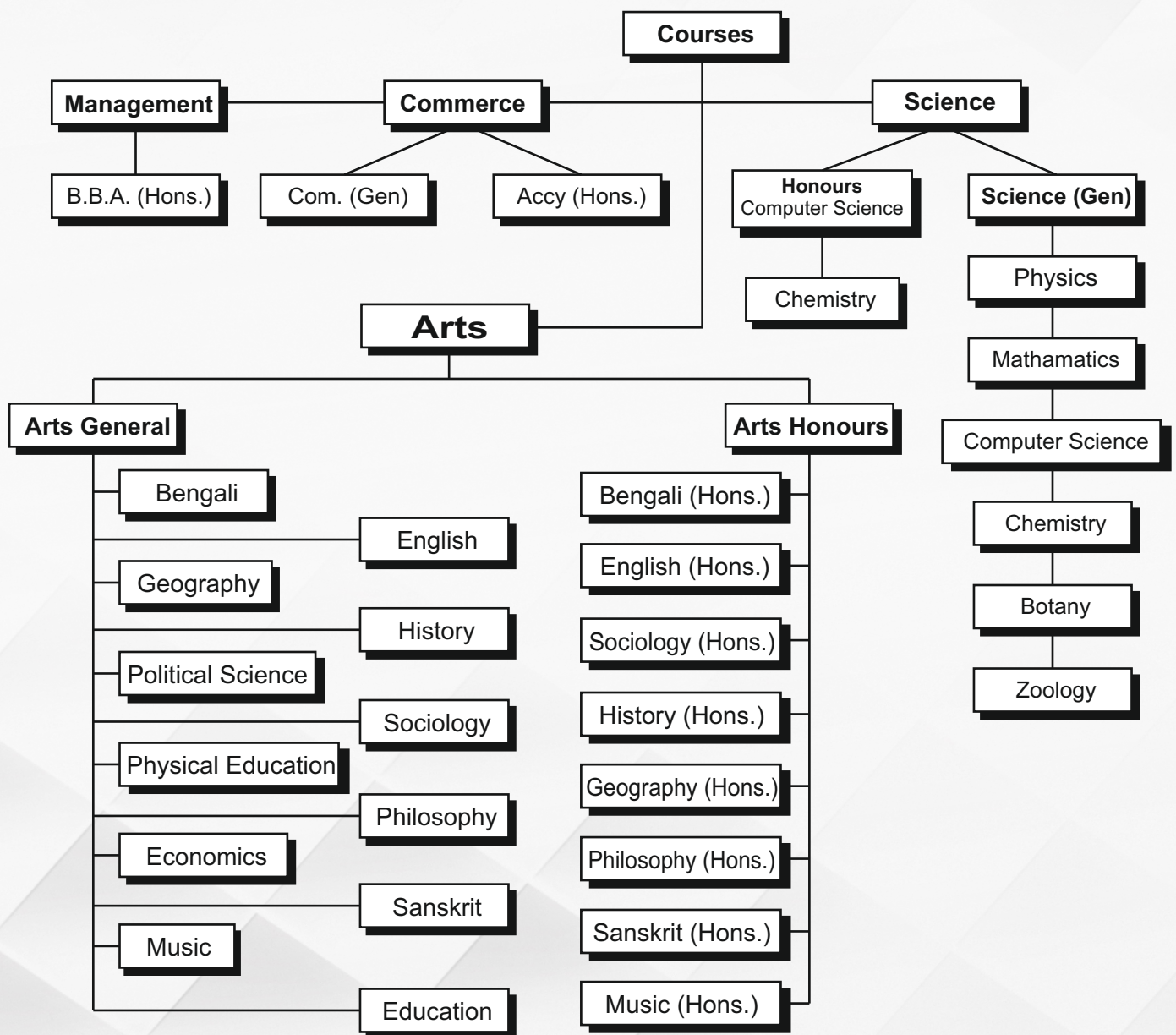
Sl. No.	Year	Number of Registered students in the 1st year class (General)	Number of Registered students in the 1st year class (Honours)
1	2007	734	245
2	2008	859	310
3	2009	926	299
4	2010	1150	370
5	2011	1275	396
6	2012	1694	382
7	2013	1431	331
8	2014	1409	414
9	2015	1397	493
10	2016	1513	498
11	2017	1140	370
12	2018	1050	422
13	2019	1283	479
14	2020	1221	548
15	2021	1331	530

The college is now endowed with learning resources in the form of sufficient number of text and reference books in the library.

The college has a small auditorium, a multi-gym, a large playground and an indoor sports complex, within its premises, to help the students striving for all round development. The college was accredited for 2nd cycle by NAAC in the year 2015. The teaching staff are sincere in their approach to the students. The non-teaching staff are also attentive to the needs of the students and sympathetic to their problems.

Despite paucity of resource paucity we are confident of exploring all available avenues of mobilising resources to improve infrastructural facilities needed for better functioning of the institution in the years to come. We are confident that we will go ahead and smile through all the difficulties that may come in our way.

Looking to Subject Profile : Subjects we offer are diversifying :



ADMISSION PROCEDURE

1. (i) Generic Electives will be chosen stream-wise i.e. B.A./B.Com/B.Sc. by a student of Honours/General Course (ii) In case of B.A/B.Sc. Honours Course, a student shall have to choose 4 Generic Electives strictly from 2 subjects/disciplines of choice taking, exactly 2 courses from each subject/discipline. Such a student shall have to study the curriculum of Generic Elective of a subject/discipline specified for the relevant semester. For example, suppose there are 5 Science subjects viz. Physics, Chemistry, Mathematics, Botany and Zoology available in a college. A student of Physics Honours shall have to choose strictly 2 subjects/disciplines from among Chemistry, Mathematics, Botany and Zoology. If the student chooses Chemistry and Mathematics as Generic Electives then he/she will have to study exactly 2 courses from Chemistry and 2 courses from Mathematics. If he/she opts for Chemistry as a Generic Elective in the 1st Semester, Mathematics in the 2nd Semester, Mathematics in the 3rd Semester and Chemistry in the 4th Semester then he/she will study the curriculum of GE-1 of Chemistry in the 1st Semester, the curriculum of GE-2 instead of GE-1 of Mathematics in the 2nd Semester, the curriculum of GE-3 of Mathematics in the 3rd Semester and the curriculum of GE-4 instead of GE-2/GE-3 of Chemistry in the 4th Semester. Similarly for B.A. Honours also. (iii) In case of B.A. General Course, a student shall have to choose 2 Generic Electives strictly from a particular subject/discipline which will be different from the core disciplines including the core languages Such a student shall have to study the curriculum of GE-1 of that subject / discipline strictly in the 5th Semester and the curriculum of GE-2 of that subject/discipline strictly in the 6th Semester. For example, suppose there are 5 Arts subjects viz. Bengali, English, Sanskrit, History and Political Science available in a college. If a student chooses Bengali as core discipline-1, History as core, discipline-2 and English language and Bengali as core languages then he/she will have to choose Sanskrit/Political Science as Generic Elective and in this case, he/she will have to study the curriculum of GE-I of Sanskrit/Political Science in the 5th Semester and the curriculum of GE-2 of Sanskrit/Political Science in the 6th Semester. In case of SEC, the mode of selection will be communicated later.

2. In view of the order of the Hon'ble Supreme Court, Credit and Full Marks of ENV5 (AECC-1) will be 4 and 100 respectively instead of 2 and 50.

On Line Admission to the Hons. Subjects through Merit List based on the following eligibility criteria

	Cours	Subject	Minimum Aggregate	Minimum Marks in the concerned subject	Seats
1.	B.A. (Hons.)	Bengali	45%	55%	81
2.	"	English	45%	55%	81
3.	"	History	45%	55%	81
4.	"	Geography	45%	55%	37
5.	"	Sociology	45%	45%	81
6.	"	Philosophy	45%	55%	56
7.	"	Sanskrit	45%	55%	32
8.	"	Music	40%	-	33
9.	B.Com (Hons.)	Accountancy	45%	50%	81
10.	B.Sc. (Hons.)	Chemistry	45%	55%	10
11.	B.Sc. (Hons.)	Computer Science	45% in H.S. Science & Mathematics 50%		32
12.	Management	B.B.A. (Hons.) Both online & Offline Admission	H.S. Pass in any stream		33

1. Admission to Arts General Courses (Intake-1310)

Note: No re-admission is possible for back / failed candidates / students. However they have an opportunity to get admission to Honours course of **Netaji Subhas Open University (C-10)**, a study centre in our college.

2. Admission to B.Sc. General Courses:

1) Botany - 25 Seats, 2) Zoology - 25 Seats, 3) Physics - 20 Seats, 4) Mathematics - 20 Seats 5) Chemistry - 20 Seats, 6) Comp Sc. - 20 Seats.

ELIGIBILITY CRITERIA:

No Student is eligible for admission to such programmes unless he/she passes H.S Examination (10+2) Students / from Board other than WBCHSE can also apply.

Within the guidelines provided by the University of Burdwan, the College determines admission criteria of various Honours and General Courses.

Eligibility criteria are put up on the college website.

Students are admitted if they fulfill admission criteria.

REQUIRED DOCUMENTS:

1. Xerox copy of online system generated Application Form.
2. Xerox copy of Madhyamik Admit Card, Mark Sheet of H.S. Examination (10+2)
3. SC/ST/OBC & PWD Candidate must attach Xerox copy of relevant certificate with the application form.
4. All original documents will have to be produced at the time of admission verification.
5. Original Migration certificate from the University/Board is to be produced at the time of filling up Burdwan University Registration Form in case of migrating candidates.
6. For the transfer case, the candidates must produce original Transfer Certificate from the institution last attended.
7. Original School/College leaving certificate from the Head of the Institution last attended is to be produced at the time of admission verification.
8. One copy of Anti-Ragging deceleration form the candidate.

CANCELLATION OF ADMISSION

If any student remains absent from his/her classes continuously for thirty days within the first two months from the date of his/her admission, his/her name will automatically be struck off the rolls, Fees submitted by the students at the time of admission shall also be forfeited.

RULES REGARDING REGULAR STUDENTS

The student once enrolled for 1st Semester will have regularity for 3 years as regular students, but he/she can complete graduation within 5 years from the date of enrolment in the 1st Year.

(STUDENTS' SUPPORT SYSTEM)

The college firmly believes that a worthy institution is expected not only to impart education to the students but also to provide them with valuable support for their progression from the college to higher education or to the world of job market. The institute also believes that during their studentship in the college adequate scope should be provided for health-aids, entertainment, refreshment, complaint redressal etc.

*LIBRARY FACILITIES

The College has a rich and useful Library consisting of more than 20,000 text and reference books of various disciplines. It has a reference section, a lending section and a separate Reading Room. The Library has now the following facilities:

(a) Open Access for Books, (b) Open Access for Journals, (c) Open Public Access Catalogue, (d) Display of current journals. On payment of the library deposit each student is provided with two cards, one Reference card and the other Lending / Borrowing card. The cards are strictly NON TRANSFERABLE. Reference card is meant for the issue of a book to be read, only on the day, in the Reading Room. Books will be issued against Lending / Borrowing card for home use.

*LIBRARY HOURS

Lending Section [Sunday Closed], 10.30 AM - 1.30 PM

Reading Room [Sunday Closed] 2.30 PM - 3.30 PM

*LIBRARY RULES

- Students can borrow two books at a time, which must be returned within 15 days from the date of issue. Books may be re issued, if there is no demand for them.
- Any student keeping a book beyond the time allowed will be fined as decided by the college and even debarred from using the library for one week or more depending on the situation.

Any book lost, damaged or defaced must be replaced by the borrower. If the book be one of a series and not be available single, the whole set must be replaced. If the book is lost, and is out of print, the borrower must pay a fine to be decided by the college, in addition to the printed price. Till the damage or loss is made good, the borrower will have no right to use the library

Honours students are allowed to borrow books only for Puja Vacation, which should be returned within one week after the re-opening of the College; thereafter fine will be charged as per rules, including the vacation period. This fine will not be excused on any ground whatsoever.

- Students will be issued books only once in a day on Borrower's Card. Return of the same will not be allowed after the lapse of a full day
- There will be no issue of books for home on Saturday, but books on Reference Card will be available for use in the Reading Room.
- Old students who have graduated from the College and are studying in Post-graduate classes may, on the recommendation of the Librarian and permission of the Principal, avail the Reading Room facility but will not be allowed to borrow books under any circumstances.
- Library cards are to be kept with utmost care, loss of which must be reported immediately to the Librarian and a duplicate card will be issued on payment of fine. Cards must be surrendered and clearance certificates will have to be obtained before filling up the forms for B.A./B.Com/B.Sc Final Examinations.
- Students seeking Transfer Certificate and the refund of Library deposit must produce a clearance certificate from the Librarian for the purpose, to the college office.
- Late fee for return of Library book beyond one month is @ Re. .20 paise per day for each student.

*GAMES & SPORTS FACILITIES

The College has a playground of its own within the college premises. It also offers facilities of physical exercise to its students through games like Football, Volleyball, Cricket, Kabadi and encourages athletics in the form of Annual Sports Meet. The College is affiliated to the Burdwan University Sports Board, and participates in inter-college competitions. Our Volleyball teams (both boys & girls) have become champions in the University for successive years.

*UNIFORM FOR PHYSICAL EDUCATION STUDENTS:

All the students who have Physical Education as combination subject must have to arrange appropriate activity dress prior to practical classes at their own cost.

Jersey & Pant: Mono colour (Sky Blue): Tracksuit (upper & lower): Mono colour (Navy Blue)

*GYMNASIUM/YOGA

The College has Gymnasium/ Yoga centre in the college premises. Separate training for boys and girls students are arranged.

*COLLEGE MAGAZINE

The college magazine, Charbak, published once a year, is edited by Students, under the guidance of an Editorial Board, comprising faculty members.

Every student is entitled to have a copy of the magazine and can contribute poems, short stories and articles to it, but their publication depends exclusively on the selection of the editorial board.

*WALL-MAGAZINE

A Wall-Magazine, Lahori, is published by the students in which articles of general interest are published by a Student Editor, under the guidance of a Professor-in-charge. Students of various departments contribute to this Wall Magazine.

*DEPARTMENTAL WALL MAGAZINE

Some departments publish their own wall magazines at a regular interval.

***COMMON ROOM**

There are two separate Common Rooms for boys and girls. A number of Journals and Newspapers are subscribed for the students which are available in the Common Room on production of Common Rooms Card. Provisions for indoor games, viz Table Tennis, Carom and Chess are also there,

***NATIONAL CADET CORPS (NCC)**

N.C.C. training is imparted to the girl & boy students of the College. Parades are held in the College Ground on Wednesday under 3rd Bengal Battalion, Serampore, Hooghly, of West Bengal and Sikim Directorate. Various camps such as ATC, CATC, NTC, AATC are organized throughout of the year. Enrolment is made just after the beginning of the 1st year classes, N.C.C, Cadets are eligible for 'B' and 'C' certificate examinations every year conducted by the Directorate at the end of January. NCC Students are required to provide his/her own bank account number at the time of enrollment to 1st year NCC for getting TA/ WA directly.

***NATIONAL SERVICE SCHEME (NSS)**

The three N.S.S. Units of the College, approved by the Burdwan University, had started functioning since January 1990. College students, both male and female, may join the scheme as one of the Co-curricular Programmes under the guidance of a Programme officer who is a member of the teaching staff. Regular activities include adoption of a village, road repairing, cleaning the college premises, mass campaign against spread of corona virus, & use of polythene for wearing mask and various other social service as well as general awareness campaigns.

***COLLEGE CANTEEN**

The College has a good canteen run by self-help group which caters to the need of the students specially those who come from distant rural areas. Good foods prepared under hygienic conditions, are served at reasonable prices.

***MEDICAL AID & REGIONAL STUDENTS' HEALTH HOME**

Students can avail consultations with the specialists in 'Student Health Home' to which the College has an institutional membership. The College has started a Health Care Unit in the campus organized by the Alumni with the sincere co-operation of local doctors.

***STUDENTS' AID FUND**

Poor and meritorious students are given aid in the form of concession in tuition fees only. Students from the economically weaker sections of the society (Scheduled Castes/Tribes/OBC/Physically Handicapped/Minorities) get Govt. of India's stipend through West Bengal Govt, to meet college fees and other expenses. Meritorious students are taken special care of by the State Govt. and the girl students get various stipends from government.

***STUDENTS' UNION**

The College has a democratically elected students' union. Its election is held as per the Constitution approved by the Governing Body of the College. Teachers and administration of the College constantly interact with the students union ; to review and redesign teaching programmes, to introduce new courses, and to ensure discipline in the college campus. The constructive relation between the administration and the students' union is a noble heritage of the college. On its own, the students' union organizes various cultural programmes, sports competitions etc. It also publishes the annual college magazine.

***VEHICLE PARKING SHED**

The college has a cycle stand within its premises where students and visitors must keep their bi-cycles, motorcycles etc.

***NOTICE BOARD**

The Central Notice Board is located on the ground floor of the college and a Digital Notice Board is displayed in front of the college office Besides, each department has its own notice board which displays relevant information relating to examination schedules, results of classtests, seminars / workshops, extension lectures, change in schedules or in allotment of classrooms, class-routine, wall-magazines, suspension and resumption of classes, departmental academic calendar etc. Therefore, students should keep themselves abreast of such information and look at the notice-board regularly.

***REMEDIAL COACHING & TUTORIAL CLASSES**

Tutorial classes are arranged for advanced and weaker students.

***VALUE PRACTICE**

- *Always maintain high standards of academic & administrative discipline.
- *Always help to keep the classroom & environment clean.
- *Always follow the rules of the institution.
- *Always promote fellow feeling, objectives, interest & image of the Institution

***DISCIPLINE**

The College is fully aware of the need for maintaining the highest standard of discipline among the students, without which the very purpose of liberal education is defeated. Teacher-student contact in this college being the closest possible, teachers here constantly inspire students to become good citizens, perfect in manners and behaviour. Students also reciprocate, and try to maintain discipline in and outside the College. Every student individually and/or collectively shall be responsible for any loss/damage to the property of the college

***ALLUMNI ASSOCIATION**

College has Allumini Association. Generally after passing the Final Examination students are registered.

***PARENT-TEACHERS MEETING**

Generally meeting of the Parents teachers are held departmentwise for the benefit of the students and suggestions are taken from parents for the development of the institution.

***BIO-DIVERSITY/SCIENCE CLUB**

The College has a Biodiversity Research Centre under which one project is running: Preparation of People's Biodiversity Register (PBR) of Tarakeswar Municipality Sanctioned by West Bengal Biodiversity Board, Department of Environment, Government of West Bengal.

***WOMEN CELL Mail : info@tarakeswardegreecollege.org**

The college has also a separate women's cell to organize debate on the issues regarding women's rights, women's empowerment, gender equality etc. invite of women's rights activists and organizes awareness campaigns and work shop on issues of gender violence and to identify the problems and needs of the female students of the College in order to redress them as far as practicable.

***HUMAN RIGHTS CELL**

The college has a Human Rights Cell comprising representatives of various stakeholders of the college. The cell organizes awareness programme for the students from time to time on issues related to human rights.

***ANTI-RAGGING CELL Mail : info@tarakeswardegreecollege.org**

In accordance with the guidelines of the UGC & the Government of West Bengal, the college has constituted an Anti-Ragging cell comprising teaching and non-teaching staff as well as students of the college.

***BOOK BANK**

The students' union of the college runs a Book Bank for poor and meritorious students.

***GRIEVANCE REDRESSAL CELL Mail : info@tarakeswardegreecollege.org**

The College has grievance cell to redress the grievances of the students. The students can drop their complaints in the specified box located in the first floor of the College, just beside the College office. However, the student must identify himself/herself complains letter by way of mentioning his/her class, and roll number.

***CAREER COUNSELLING CELL/ICT CLUB**

The College has a Career Counselling Cell which organizes various programmes for giving guidance to the students for placement in various jobs after completion of their degree. The cell also introduces on-line Entry-to-Service Exam, and also provides news of jobs in the college website.

***NETAJI SUBHAS OPEN UNIVERSITY STUDY CENTRE C-10 (Ph-03212-279628)**

With a view to providing education through distant learning mode, the college started a study center of NSOU in its campus from July, 2002The centre offers the following programmes:-

- (A) **B.A. (HONS).**- Beng, Eng, Zoology, Physics, Hist, Pol.Sc., Pub. Adm. Eco., Geo., Math, (B) **B.COM (HONS)**-Accy.
- (C)**PG DEGREE** - Beng, Eng., Pol.Sc, Hist., Math., Education,
- (D) **PG DIPLOMA** - Journalism & Mass Communication
- (E) **CERTIFICATE COURSE & BPP** - Human Rights

CBCS				GENERAL							
HONOURS		GENERAL		CORE COURSE		ELECTIVE COURSE		ABILITY ENHANCEMENT COURSE			
CORE COURSE	ELECTIVE COURSE	ABILITY ENHANCEMENT COURSE	CORE COURSE	DSE	GE	CORE COURSE	DSE	GE	ABILITY ENHANCEMENT COURSE		
		AEECC (ENVS/ENG/HINDI/MIL)							AEECC (ENVS/ENG/HINDI/MIL)		
14 (ThPr/ThTu) X (4+2/5+1) =84	4 (ThPr/ThTu) X (4+2/5+1) =24	2 X 2 =4	12 (ThPr/ThTu) X (4+2/5+1) =72	6/4 (ThPr/ThTu) X (4+2/+1) =36(BSc)/ 24(BA)	0/2 (ThPr/ThTu) X (4+2/+1) =0(BSc)/ 12(BA)	12 (ThPr/ThTu) X (4+2/5+1) =72	2/2	4/4	SEC		
140											
SEM-1 20 Credits	SEM-2 20 Credits	SEM-3 26 Credits	SEM-4 26 Credits	SEM-5 24 Credits	SEM-6 24 Credits	SEM-1 20 Credits	SEM-2 20 Credits	SEM-3 20 Credits	SEM-4 20 Credits	SEM-5 20 Credits	SEM-6 20 Credits
CC 1 CC 2 (2x6) = 12	CC 3 CC 4 (2x6) = 12	CC 5 CC 6 CC 7 (3x6) = 18	CC 8 CC 9 CC 10 (3x6) = 18	CC 11 CC 12 (2x6) = 12	CC 13 CC 14 (2x6) = 12	(Bsc) CC 1 for Sub 1,2,3 (3x6) = 18	(Bsc) CC 2 for Sub 1,2,3 (3x6) = 18	(Bsc) CC 3 for Sub 1,2,3 (3x6) = 18	(Bsc) CC 4 for Sub 1,2,3 (3x6) = 18	(Bsc) DES 1 for Sub 1,2,3 (3x6) = 18	(Bsc) DES 2 for Sub 1,2,3 (3x6) = 18
GE 1	GE 2	GE 3	GE 4	DEC 1 DEC 2 (2x6) = 12	DEC 3 DEC 4 (2x6) = 12	(BA) CC 1 for Sub 1,2 & Eng L1/1 (3x6) = 18	(BA) CC 2 for Sub 1,2 & Beng L2/1 (3x6) = 18	(BA) CC 3 for Sub 1,2 & Beng L1/2 (3x6) = 18	(BA) CC 4 for Sub 1,2 & Beng L1/2 (3x6) = 18	(BA) DES 1 for Sub 1,2 (2x6) = 12	(BA) DES 2 for Sub 1,2 (2x6) = 12
AEECC 1 (1x2) = 2	AEECC 1 (1x2) = 2	SEC 1 (1x2) = 2	SEC 1 (1x2) = 2	—	—	—	—	—	—	(BA) GE 1 (1x6) = 6	(BA) GE 2 (1x6) = 6
—	—	—	—	—	—	BA & BSc AEECC 1 (1x2) = 2	BA & BSc AEECC 2 (1x2) = 2	BA & BSc SEC 1 (1x2) = 2	BA & BSc SEC 2 (1x2) = 2	BA & BSc SEC 3 (1x2) = 2	BA & BSc SEC 4 (1x2) = 2
<p>BA/BSC HONORS COURSE: (CC 14x75=1050) + (DSE 4x75=300) + (GE 4x75=300) + (SEC 2x50=100 = 1800+ ENVS)</p> <p>BA GENERAL COURSE: (CC 12x75=900) + (DSE 4x75=300) + (GE 2x75=150) + (AEECC 1x50=50)+(SEC 4x50=200=1600+ ENVS) +ENVS-AEECC-1x100=1700</p> <p>BSC GENERAL COURSE: (CC 12x75=900) + (DSE 6x75=450) (AEECC 1x50=50) + (SEC 4x50=200=1600+ ENVS)+ENVS-AEECC-1x100 = 1700</p>											

Fees & Other Charges (2022-23)

	B.A. (Gen.)	B.A. (Hons.)	B.com. (Gen.)	B.com. (Hons.)	B.Sc. (Gen.)	B.Sc. (Hons.)
1. Admission Fee (Per Sem.)	100.00	100.00	100.00	100.00	100.00	100.00
2. Tuition Fee (Per Month)	50.00	75.00	60.00	85.00	85.00	110.00
3. Development Fee (Per Month)	60.00	60.00	60.00	60.00	60.00	60.00
4. Building Fee (Per Sem.)	100.00	100.00	100.00	100.00	100.00	100.00
5. University Registration & Enrolment fees	As Per University's Norm					
6. Library Caution Money (Refundable within 6 months from the date of passing out) (One time)	200.00	200.00	200.00	200.00	200.00	200.00
7. Cultural Fee (Per Sem.)	55.00	55.00	55.00	55.00	55.00	55.00
8. Library Card & Identity Card (at the time of admission)	50.00	50.00	50.00	50.00	50.00	50.00
9. College Examination (Per Sem.)	70.00	70.00	70.00	70.00	70.00	70.00
10. Library Fee (Per Sem.)	25.00	25.00	25.00	25.00	25.00	25.00
11. Electric Charges (Per Month)	20.00	20.00	20.00	20.00	20.00	20.00
12. Sports & Games (Per Sem.)	20.00	20.00	20.00	20.00	20.00	20.00
13. University Games & Sports Fees	As Per University's Norm					
14. Magazine Fee (Per Year)	60.00	60.00	60.00	60.00	60.00	60.00
15. Common Room Fee (Per Sem.)	10.00	10.00	10.00	10.00	10.00	10.00
16. Student Aid Fund (Per Sem.)	10.00	10.00	10.00	10.00	10.00	10.00
17. Students Health Home (Per Sem.)	05.00	05.00	05.00	05.00	05.00	05.00
18. Centre Fee (at the time of form fill-up)	As Per University's Norm					
19. Transfer Certificate Fee	100.00	100.00	100.00	100.00	100.00	100.00
20. Computer Charges (Per Sem.)			80.00	80.00	for computer classes	
21. Functional Communicative English	For B.B.A. (H) & Com. Science (H) Rs.150/- per month					
22. B.B.A. (Hons.) (per semestar)	7000.00					
23. ICT Developments Fee (Per Sem.)	100.00					
24. C.B.C.S. Process Fee (Per Sem.)	80.00	120.00	80.00	120.00	80.00	120.00

Other Fees :

1. Duplicate Identity Card - Rs. 40/
2. Duplicate Library Card- Rs. 40/

3. Laboratory Fees :

- a) Geography Hons.- Rs. 600/- Per Semestar
- b) Computer Science Honours Rs. 600/- Per Semestar
- c) Chemistry Hons. Rs. 1000- Per Semestar
- d) B.Sc. General- Rs. 350/- Per Semestar
- e) Physical Education General- Rs. 200/- Per Semestar
- f) Geography General- 200/- Per Semestar

- 4. Laboratory Caution Deposit (One time)**
- a) Geography Hons.- Rs. 200/-
 - c) Geography General- Rs. 80/-
 - e) B.Sc. Gen.- Rs. 150/

* Fee per year per student against sl. no. 7, 12, 14, 15 is Rs. 230.00 out of which Rs. 55/- will be collected at the time of admission and resedual amount Rs. 175/- will be collected after formation of students' council.

- b) Physical Education General- Rs. 80/
- d) Computer Science Hons.- Rs.200/
- f) Chemistry Hons.- Rs.200/

* Fees once deposited are not refundable.

Cash Counter Close: 2 pm

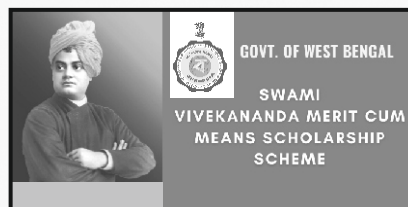
General Rules	Result (% , Grade, Letter Grade)	Evaluation	Weightage
• 1 Credit 1 hour Class/Tutorial per week	90-100% / 10 / O (Outstanding)	Course Without Practical	80% of 75 = 60
• 1 Practical Class 2 hours per week	80-90% / 9 / A+ (Excellent)	A. Semester end exams	
• Practical & Tutorial are mutually exclusive	70-80% / 8 / A (Very Good)	10 out of 15 Questions x2 =	20
• 6 Credit Paper 75 marks	60-70% / 7 / B+ (Good)	4 out of 6 Questions x5 =	20
• 2 Credit Paper 50 marks	50-60% / 6 / B (Above Average)	2 out of 4 Questions x 10	20
• Dissertation/Project (SEM 6)= DSE only	40-50% / 5 / C (Average)	B. Internal Assessment	20% of 75 = 15
• Chance not availed Chance Lost	35-40% / 4 / P (Passed)	Attendance (Theory & Tutorial)	5
• To clear all Semesters within 5 years from year of Enrollment	Below 35% 0 / F (Failed)	Class Test/ Seminar/Assignment (Theoretical & Tutorial)	5+5 = 10
• Maximum 3 chances to clear one Semester		Course With Practical	
• May appear at next Semester with backlog	CGPA (Hons & General)	A) Internal Assessment	20% of 75 = 15
• Reappearing: Once only in 50% of Theory Papers	7.50 & above: 1 st Division, Distinction	Attendance	5
• No Reappearing/ PPR for Internal/ Viva/ Class Test/Seminar/ Project/ Field Report/ Survey	6.50-7.50: 1 st Division	Class Test/Assignment/ Seminar (Theory & Practical)	5+5 = 10
• Review: In case of Increase, up to 8% - Full Credit; above that, half of the rest	5.00-6.50 (For Hons): 2 nd Division 4.00-6.50 (For General): 2 nd Division	B) Practical	20
• No review for AECC & SEC	Below 5.00 (Hons) / 4 (General)= Failed	Lab Notebook	5
• Third examiner in case of increase above 20%		Viva Voce	5
• Review: Decrease, full up to 4%, half of the rest	Attendance	Experiment	10
• Passed not to be Failed due to marks reduction on PPR	• Above 50% but below 60%=2	C) Semester end exams	40
• Scrutiny & Review of the same course not permitted	• Above 60% but below 75 %= 3	5 out of 8 Questions x2 =	10
• Cancellation: Entire Exams including Practical	• Above 75% but below	2 out of 4 Questions x5 =	10
• Honours: 26 Courses, 140 credits, 1900 marks	• 90 %= 490% & above= 5	2 out of 4 Questions x 10=	20
• General: 24 Courses, 120 credits, 1700 marks		SEC	
• N.C	Continuous Assessment	• Internal Assessment	
• N.A	➤ C1: 2 nd month/8 th week: 10%	Class Test / Assignment / Seminar	20% of 50 = 10
• SNC	➤ C2: 4 th month/16 th week: 10%	• Semester end exams	40
	➤ C3: 5 th month/21 st -23 rd week: 80%	5 out of 8 Questions x2 =	10
		2 out of 4 Questions x5 =	10
		2 out of 4 Questions x 10=	20

◆ Governing Body

1. Dr. Sujit Kumar Roy, President, G.B.
2. Dr. Amal Kanta Hati, Principal & Ex-officio Secretary G.B.
3. Srimat Swami Hrishikesh Sureshar Ashram, Member, G.B.
4. Sri Swapan Samanta, Member, G.B.
5. Sri Kajal Kumar Kunti, Member, G.B.
6. Dr. Kakali Sharma, Member, G.B.
7. Dr. Tapan Kumar Ghosh, Member, G.B.
8. Dr. Aparna Panday, Member, G.B.
9. Sri Sasanka Sekhar Bera, Member, G.B.
10. Sri Asish Samanta, Member, G.B.

About some scholarships availed by the students of our college :-

1. SWAMI VIVEKANANDA MERIT – CUM – MEANS(SVMCM) SCHOLARSHIP (WB Govt.)



- Mode of Application-Online
- Website: <https://svmcm.wbhed.gov.in/>
- Application opens in the month of November & closes in the month of March each year. Swami Vivekananda Scholarship.
- Amount of scholarship: **Rs 12000/-** per year for B.A/BBA/B.Com (H/G) student and Rs-18000/- per year for B.Sc students(H/G).
- Number of students received this scholarship in the session of 21-22: Fresh 745 and renewed 427.
- Eligibility: Minimum 60% Marks obtained in last examination.
- Contact person in the college: **Arnab Samanta**
 - Mob: 7586961157 / 8016016

2. OASIS Scholarship(W.B Govt.)



- Mode of Application - Online
- Website: <http://oasis.gov.in/>
- Application opens in the month of June / closes in the month of December each year.
- Amount of scholarship : 1. Rs. 3000/- 5580/- per year for SC/ST Students.
 2. Rs **1800/- 4880/-** per year for OBC student
- Number of students received this scholarship in this session of 21-22 were 1491.
- Eligibility: Student must belong to **SC/ST/OBC** category.
- Contact person in this college : **Mithun Bhumij**
 - Mob: 9064750574(10.30 am-5.00 pm)/8016016726

About some scholarships availed by the students of our college :-

3. JINDAL Scholarship (Private)

- Mode of Application - offline
- Website for downloading application form <https://www.sitaramjindalfoundation.org>
- Application opens in the month of July & closes in the month of January each year.
- Amount of scholarship: Rs 1800/- to 6000/- per Semester.
- Number of students received this scholarship in the session of 2021-22: 60.
- Eligibility: Above 60% marks. Marks obtained in last examination.
- Contact person in the college: **Rahul Dolui**

● Mob: 7699987502/8016016726



4. Minority(Aikyashree)Scholarship (WB Govt.)

- Mode of application - Online.
- Website:- <https://wbmdfcscholarship.org/>
- Application opens in the month of November and closes in the month of March each year.
- Amount of scholarship: 1. Below 50% Rs-4500/- per year.
2. Above 60% Rs-12000/- (BA/B.COM/BBA per year.
3. Rs-18000/- (BSc) per year.
- Number of students received this scholarship in the session 2021 22:500
- Eligibility: 1. Below-50% marks Marks obtained in last examination
2. Above-60% marks Marks obtained in last examination
- Contact person in the college: **Robaida Khatun**

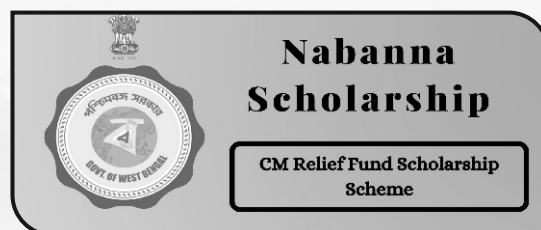
● Mob: 810012997
9064833955



5. NABANNA Scholarship (WB Govt.)

- Mode of application - Online.
- Any Query please visit :-
Website:- <https://wbmdfcscholarship.org/>
- Application opens in the month of November and closes in the month of March each year.
- Amount of scholarship: Rs - 10000/- (One Time Grant)
- Eligibility: Above 50% to Below 60% Marks obtained in last examination.
- Contact person in the college : **Robaida Khatun**

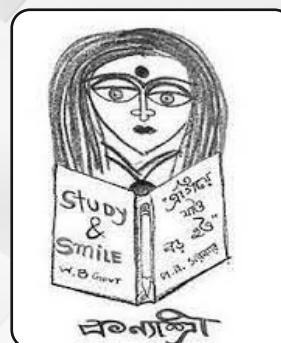
● Mob: 810012997
9064833955



About some scholarships availed by the students of our college :-

6. KANYASHREE (WB. GOVT.)

- Mode of application - Online.
- Website:- <https://www.wbkanyashree.gov.in/>
- Application opens in the month of April and closes in the month of March each year.
- Amount of scholarship: 1. K1- Rs-1000/-
2. K2- Rs-25000/-
- Number of students received this scholarship in the session 2021-22 K1-5 K2-18.(in college portal)
- Eligibility: 1. K1-13 Above Age.(Only Female Student)
2. K2- Rs-25000/2. K2-18 Above to below 19 years. .(Only Female Student)
- Contact person in the college: 1. **Kausik Maji**
● Mob:- 8016016726



7. NATIONAL SCHOLARSHIP (NSP) (Central Govt.)

- Mode of application-Online
- Application opens in the month of November and closes in the month of February each year.
- Amount of scholarship: Rs- 10000/- Per Year.
- Number of students received this scholarship in the session 2021-22: 681
- Eligibility: Above 75% Marks obtained in last examination.
- Contact person in the college: **Rahul Dolui**
● Mob:7699987502/8016016726



8. Any other Scholarships :-

- Central Sanskrit University



- LIC



- TATA



- COLGATE



Note :- Any kind of other Govt. and Non-Govt. Scholarships are available

The College Family

-: Teaching Faculty / Designation :-	
Dr. Amal Kanta Hati, M.Com., M.Phil., Ph.D.	Principal
Department of Bengali	
Mr. Harendra Nath Kole, M.A., M.Phil.	Associate Professor
Dr. Manik Mondal, M.A., Ph.D.	Assistant Professor
Dr. Mahuya Biswas, M.A., B.Ed, M.Phil, Ph.D.	Assistant Professor, Head of the Dept.
Mr. Saumen Mukhopadhyay, M.A., M.Phil.	SACT
Smt. Paromita Chatterjee Banerjee, M.A.	SACT
Department of English	
Dr. Tapan Kumar Ghosh, M.A., Ph.D.	Associate Professor
Dr. Sutanuka Ghosh Roy, M.A., M.Phil., Ph.D.	Associate Professor
Smt. Vedatrayee Banerjee, M.A., M.Phil.	Assistant Professor, Head of the Dept.
Mr. Gourab Chatterjee, M.A., B.Ed.	SACT
Mr. Sajay Sutradhar, M.A.	SACT
Rimpa Pal, M.A.	SACT
Krishna Bera, M.A. M.Phil.	SACT
Mr. Sumalya Ghosh, M.A., M.Phil.	SACT
Department of History	
Dr. Arundhati Moulik Ray, M.A., M.Phil., Ph.D.	Associate Professor
Dr. Sahidujjaman Khan, M.A., M.Phil, Ph.D.	Assistant Professor, Head of the Dept.
Samarpita Ghosh, M.A., M.Phil.	SACT
Umesh Biswas, M.A., B.Ed.	SACT
Kaustab Bagchi, M.A., M.Phil.	SACT
Sukanta Adhikary, M.A., B.Ed.	SACT
Soumen Ghosh, M.A., B.Ed.	SACT
Tanmay Ghosh, M.A.	SACT
Department of Economics	
Dr. Asish Kumar Pal, M.Sc., M.Phil, Ph.D.	Assistant Professor, Head of the Dept.
Department of Philosophy	
Md. Shanawaz, M.A., M.Phil.	Associate Professor
Dr. Dibakar Manna, M.A., B.Ed., Ph.D.	Assistant Professor, Head of the Dept.
Dr. Swati Rakshit, M.A., Ph.D.	SACT

Ms. Moumita Chatterjee, M.A., M.Phil.	SACT
Department of Political Science	
Mr. Suvro Sarkar, M.A., B.T.	Associate Professor, Head of the Dept.
Syed Sha Taukirul Islam, M.A., M.Phil.	SACT
Department of Sociology	
Mrs. Kamalika Mitra, M.A.	Assistant Professor
Zargis Hossain, M.A.	Assistant Professor, Head of the Dept.
Mr. Chandan Kumar Maiti, M.A.	SACT
Mr. Animesh Pan, M.A., M.Phil., M.A.(Envs)	SACT
Dr. Sourav Ghosh, M.A., M.Phil., Ph.D.	SACT
Department of Physical Education	
Dr. Shantanu Halder, M.P.Ed., M.Phil, Ph.D.	Assistant Professor, Head of the Dept.
Palash Kumar Das, M.P.Ed.	SACT
Rita Santra, M.P.Ed., N.I.S.	SACT
Department of Geography	
Dr. Pintu Shee, M.A., Ph.D.	Assistant Professor
Dr. Chandramallika Biswas, M.A., M.Phil., Ph.D.	Assistant Professor
Mrs. Sulata Hembram, M.A.	Assistant Professor, Head of the Dept.
Ms. Rishika Paul, M.Sc., M.Ed.	SACT
Ms. Sucharita Sasmal, M.A., B.Ed.	SACT
Mr. Ramkrishna Dey, M.Sc., M.Ed.	SACT
Department of Sanskrit	
Mr. Animesh Halder, M.A., M.Phil	Assistant Professor, Head of the Dept.
Dr. Dola Pal, M.A., M.Phil. Ph.D.	SACT
Mr. Abhinandan Roy, M.A., M.Phil.	SACT
Mr. Nabin Laga, M.A., M.Phil.	SACT
Dr. Chiranjeet Ghosh, M.A., Ph.D.	SACT
Mr. Sandip Jana, M.A., M.Phil.	SACT
Department of Music	
Dr. Srabani Sen, M.A., Ph.D.	Assistant Professor, Head of the Dept.
Mrs. Nita Bandyopadhyay, M.A., B.High, A.I.R.	SACT
Ms. Priyanka Das, M.Music	SACT
Ms. Jayashree Mondal, M.Music	SACT

Ms. Ishita Kundu, M.Music	SACT
Department of Education	
Mr. Tuhin Pal, M.A.	SACT, Head of the Dept.
Department of Commerce	
Ms. Pingala Roy Chowdhury, M.Com.	Assistant Professor
Mr. Abhik Sinha Roy, M.Sc., M.Phil.	SACT
Sk. Nasiruddin, M.Com.	SACT
Mr. Sumanta Patra, M.Com.	SACT
Department of Business Administration	
Dr. Jyotirmoy Mazumder, M.B.A., Ph.D.	SACT, Head of the Dept.
Dr. Jagannath Koley, M.B.A., Ph.D.	SACT
Mr. Debajyoti Rakshit, M.B.A., M.Com.	SACT
Department of Mathematics	
Dr. Srimanta Sinha Roy, M.Sc., M.Phil., Ph.D.	Associate Professor, Head of the Dept.
Mr. Soumyadip Mondal, M.Sc.	SACT
Ms. Pramita Bhar, M.Sc.	SACT
Ms. Tapasi Dey, M.Sc.	SACT
Department of Computer Science	
Mr. Sandip Tigga, M.Tech.	Assistant Professor, Head of the Dept.
Mr. Ananda Khamaru, M.Sc.	SACT
Mr. Sudip Kumar Banerjee, M.C.A., ME(CSE)	SACT
Mr. Anis Chakraborty, M.C.A.	SACT
Sk Md Abidar Rahaman, M.Tech. (CSE)	SACT
Mr. Pritam Das, M.Sc., B.Ed.	SACT
Department of Physics	
Sk Yasnur, M.Sc.	Assistant Professor, Head of the Dept.
Summa Sultana, M.Sc.	SACT
Department of Chemistry	
Dr. Arpan Manna, M.Sc., Ph.D.	Assistant Professor, Head of the Dept.
Mr. Suprakash Dhara, M.Sc.	SACT
Mr. Sunil Mukherjee, M.Sc.	SACT
Mr. Animesh Bag, M.Sc.	SACT
Ms. Labani Sarkar, M.Sc.	SACT

Department of Botany	
Mr. Bidyuddipto Chakroborty, M.Sc.	SACT
Department of Zoology	
Mr. Debangshu Banerjee, M.Sc.	SACT, Head of the Dept.
Library	
Dr. Aparna Panday, M.A., MLIS., Ph.D.	Librarian

Office Staff

Name	Designation
Reba Bhattacharyya, M.A., BLIS	Library Clerk
Sasanka Sekhar Bera, B.A.	Office Bearer
Swapan Kumar Shaw, B.A. (HONS)	Guard
Shyam Raut, MP Appered	Sweeper/ Zamader
Saumya Mallik, B.Com. (Hons.)	Clerk
Haradhan Kundu, IET, WBESCC, WBEWP	Electrician cum Caretaker
Asim Pal, B.Com.	Generator/Pump Gas Plant Operator cum Mechanic
Sikha Ghorui, M.A.	Lady Attendant
Khokan Halder, H.S.	Group-'D' Peon
Sanjib Bera, M.A.	'Laboratory Attendant' (Computer Science)
Robaida Khatun, M.A.	Laboratory Attendant' (Geography)
Mithun Bhumij, B.A. (HONS)	'Laboratory Attendant' (Geography)
Ashis Samanta, HS	'Laboratory Attendant' (Physical Education)
Kausik Maji, HS	'Laboratory Attendant' (Physical Education)
Rahul Dolui, B.COM(HONS)	CLERK
Nilesh Chatterjee, L.L.B., M.B.A.	Clerk
Arnab Samanta, B.A.	Lab Attendant (Botany)
Subhajit Kumar Ghosh, B.A.	LIBRARY PEON
Md. Fayem, B.A. (HONS)	Lab Attendant (Physics)
Munmun Ghosh, HS	Lab Attendant (ZOOLOGY)
Akshaya Jana, B.A	Lab Attendant (COMPUTER SCINCE)
Uday Dasmohori, H.S	Lab Attendant (Chemistry)
Tarak Majhi	Sweeper (Part Time)
Chandi Pakhira (Roy), MP	Sweeper (Part-Time)
Manas Guchhait, DEE	Casual Clerk
Nepal Chandra Adhikary	Mali

Tarakeswar Degree College

List of Holidays

July 2022 to June 2023

SI No.	Name of Holiday	Date	Day	No of Holiday
1	Shrabani Mela	(18,25/07/22) - (01,08/08/22)	Monday	04
2	Id-ud-zoha	10/07/2022	Sunday	00
3	Muharram	09/08/2022	Tuesday	014
4	Raksha Bandhan	12/08/2022	Friday	01
5	Independence Day	15/08/2022	Monday	01
6	Janmastami	19/08/2022	Friday	01
7	Foundation Day	05/09/2022	Monday	01
8	Biswakarma	17/09/2022	Saturday	01
9	Mahalaya & ///	25/09/2022, 26/09/2022	Sunday	01
10	Puja Holidays, Gandhi Jayanti, Fateh Duaz Daham, Kali Puja, Bhatri Dwitiya (Excluding. Sundays)	30/09/2022 - 27/10/2022		24
11	Chat Puja	30/10/2022 - 31/10/2022	Sunday, Monday	01
12	Jagadhatri Puja	02/11/2022, 07/11/2022	Wednesday	02
13	Birth Day of Guru Nanak	08/11/2022	Tuesday	01
14	Birthday of Birsa Munda	15/11/2022	Tuesday	01
15	Christmas Day	25/12/2022	Sunday	01
16	Winter Recess	26/12/2022 - 31/12/2022	Monday - Saturday	06
17	English New Year's Day	01/01/2023	Sunday	00
18	Birthday of Swami Vivekananda	12/01/2023	Thursday	01
19	Poush Parban (Makar Sankranti)	15/01/2023	Sunday	00
20	Birthday of Netaji	23/01/2023	Monday	01
21	Republic Day	26/01/2023	Thursday	01
22	Saraswati Puja [Sree Panchami]	26/01/2023 - 27/01/2023	Thursday - Friday	01
23	Birthday of Thakur Panchanan Barma	14/02/2023	Tuesday	01
24	Shivaratri	18/02/2023	Saturday	01
25	Doljatra, Ram Navami, Mahavir Jayanti	07/03/2023 - 08/03/2023, 30/03/2023 - 04/04/2023	Tuesday - Wednesday	04
26	Good Friday, Nil Puja	07/04/2023, 13/04/2023	Friday	02
27	Birthday of B.R. Ambedkar	14/04/2023	Friday	01
28	Bengali New Year	15/04/2023	Saturday	01
29	May Day	01/05/2023	Monday	01
30	Rabindranath's Birth day	09/05/2023	Tuesday	01
31	Buddha Purnima	To be declare later		
32	Id-ul-Fitre	To be declare later		

N.B. 1) Holidays may be change due to modification, if necessary.
2) Holiday for various occasions -
1-Sports, 1-Social, 1-Freshers welcome, 1-Fateha Duazz daham, 1-Sab-e-Barat

Tarakeswar Degree College						
Academic Calendar Year 2022-23 (1st July, 2022 to 30th June, 2023)						
Month	Week	Dates in the week	No. of Holidays (including Sunday)	No. of no class days	No. of days available for holding Admission Work, Classes, Class test, Internal Assessment, Examinations, Observations etc.	Remarks
1	2	3	4	5	6	7
July 22	1st	July (1-7)	2 Days: Ratha Yatra- 01.07.22 Sunday- 03.07.2022	2	5	Examination of 4th sem
July 22	2nd	July (8-14)	1 Day : 10/07/2022	1	6	Examination of 4th sem
July 22	3rd	July (15-21)	2 Days: Sunday 17.07.22 Srabani Mela-18.07.22	2	5	Examination of 2nd sem
July 22	4th	July (22-28)	2 Days: Sunday 24.07.22 Srabani Mela-25.07.22	2	5	Examination of 2nd sem
July - Aug. 22	5th	July 29-Aug 04	2 Days: Sunday 31.07.22 Srabani Mela-01.08.22	2	5	commencement of classes of 3rd & 5th sem on and from 2nd August
Aug 22	6th	Aug (05-11)	3 Days: Sunday 07.08.22 Srabani Mela-08.08.22 Muharram-09.08.22	3	4	Classes
Aug 22	7th	Aug (12-18)	3 Days: Raksha Bandhan - 12.08.22 Sunday-14.08.22 Independence day 15.08.22	3	4	Classes
Aug 22	8th	Aug (19-25)	2 Days : Janmastami - 19.08.22 Sunday - 21.08.22	2	5	Classes
Aug.-Sept. 22	9th	Aug 2-Sept 01	1 Days Sunday - 28.08	1	6	Classes

Sept.22	10th	Sept. (2-8)	2 Days: Sunday-04.09.22 Foundation Day:05.09.22	2	5	classes
Sept.22	11th	Sept. (9-15)	1 Day Sunday-11.09.22	1	6	classes
Sept.22	12th	Sept. (16-22)	2 Days Bisakarma Puja:17.09.22 Sunday:18.09.22	2	5	commencement of classes of 1st semester on and from 19th September
Sept.22	13th	Sept. (29-29)	1 Day Sunday & Mahalaya : 25.09.22, 26.09.2022 Birth Day of Vidyasagar	2	5	classes
Sept.-Oct.22	14th	Sept.30-Oct.06	Puja Holidays	7	Nil	Nil
Oct.22	15th	Oct.(7-13)	Puja Holidays 9.10.22 Sunday, 07.10 - 10.10.22	4	3	Exam Internal
Oct.22	16th	Oct.(14-20)	Puja Holidays 16.10.22 - 20.10.22	5	2	Nil
Oct.22	17th	Oct.(21-27)	Puja Holidays	7	Nil	Nil
Oct.-Nov.22	18th	Oct.28-Nov.-03	3 Days Sunday: 30.10.22 Chat Puja: 31.10.22 Jagadharti Puja : 02.11.22	6	1	classes
Nov.22	19th	Nov.(4-10)	2 Days Sunday: 06.11.22 Guru Nanak's birth day: 08.11.22, 07.11.22 Sathelayaz-Daham	3	4	classes
Nov.22	20th	Nov.(11-17)	2 Days Sunday: 13.11.22 Birsa Munda's Birth day: 15.11.22	2	5	classes
Nov.22	21st	Nov.(18-24)	1 Day Sunday: 20.11.22	1	6	classes
Nov.-Dec.22	22nd	Nov.25-Dec.01	1 Day Sunday: 27.11.22	1	6	classes
Dec.22	23rd	Dec.(02-08)	1 Day Sunday: 04.12.22	1	6	classes
Dec.22	24th	Dec.(09-15)	1 Day Sunday: 11.12.22	1	6	classes / Tentative exam date Sem 5 - 12.12.22-21.12.22
Dec.22	25th	Dec.(16-22)	1 Day Sunday: 18.12.22	1	6	classes

Dec.22	26th	Dec.(23-29)	5 Days: Sunday & X-mas day :25.12.22 Winter Recess	5	2	classes
Dec.22	27th P-I	Dec.(30-31)	2 Days Winter Recess	2	Nil	Tentative exam date Sem 3 28.12.22 - 16.01.23
2nd Phase : From 01.01.2023 to 30.06.2023						
Jan.23	27th P-I	Jan(01-05)	1 Day : Sunday & New Year Day - 01.01.23	1	6	classes
Jan.23	28th	Jan(06-12)	2 Days : Sunday-08.01.23 Birth Day of swami Vivekananda-12.01.23	2	5	classes
Jan.23	29th	Jan(13-19)	1 Day : Sunday & Makar Sankranti-15.01.23	1	6	Tentative exam date Sem 1 18.01.23 - 07.02.23
Jan.23	30th	Jan(20-26)	3 Days: Sunday - 22.01.23 Netaji's Birthday-23.01.23 Republic Day-26.01.23	3	4	classes
Jan.-Feb.23	31st	Jan27-Feb. 02	2 Days : Saraswati puja-27.01.23 Sunday - 29.01.23	2	5	classes
Feb.23	32nd	Feb.(03-09)	1 Day : Sunday - 05.02.23	1	6	classes
Feb.23	33rd	Feb.(10-16)	2 Days: Sunday - 12.02.23 Birthday of Thakur Panchanan Barma-14.02.23	2	5	classes
Feb.23	34th	Feb.(17-23)	2 Days : Shivarati-18.02.23 Sunday - 19.02.23	2	5	classes
Feb.-Mar.23	35th	Feb.-24-Mar.01	1 Day : Sunday - 26.02.23	1	6	classes
Mar.23	36th	Mar.(02-08)	3 Days : Sunday-05.03.23 Doljatra-07.03.23-08.03.23	3	1	classes

Mar.23	37th	Mar.(09-15)	1 Day: Sunday-12.03.23	1	6	classes
Mar.23	38th	Mar.(16-22)	1 Day: Sunday-19.03.23	1	6	classes
Mar.23	39th	Mar.(23-29)	1 Day: Sunday-24.03.23	1	6	classes
Mar-Apr.23	40th	Mar.30-Apr.5	30.03.23 Ram Navami, 1 Day: Sunday- 02.04.23, 04.04.22- Mahabir Jayanti	3	4	classes
Apr.23	41st	Apr. (6-12)	2 Days: Good Friday-07.04.23 Sunday-09.04.23	2	5	classes
Apr.23	42nd	Apr. (13-19)	3 Days: Birth Day of B.R.Ambedkar-14.04.23 Bengali New Year - 15.04.23, 13.04.22 - Nil Puja Sunday-16.04.23	4	3	classes
Apr.23	43rd	Apr. (20-26)	2 Days: Sunday-23.04.23 Eid-ul-Fitr will be declare later	2	5	classes
Apr.-May.23	44th	Apr.27 - May3	2 Days: Sunday-30.04.23 May day - 01.05.23	2	5	classes
May.23	45th	May(4-10)	3 Days: Buddha Purnima-05.05.23 Sunday-07.05.23 Rabindranath's Birthday	3	4	classes
May.23	46th	May(11-17)	1 Day: Sunday-14.05.23	1	6	classes
May.23	47th	May(18-24)	1 Day: Sunday-21.05.23		6	summer / Recess
May.23	48th	May(25-31)	1 Day: Sunday-28.05.23	1	6	summer / Recess
June.23	49th	June(1-7)	1 Day: Sunday-04.06.23	1	6	summer / Exam Sem 6
June.23	50th	June(8-14)	1 Day: Sunday-11.06.23	1	6	Exam of the Sem 6
June.23	51st	June(15-21)	1 Day: Sunday-18.06.23	1	6	Exam of the Sem 6
June.23	52nd	June(22-28)	1 Day: Sunday-25.06.23	1	6	Exam of the Sem 4
June.23	53rd	June(29-30)	Nil	1	2	Exam of the Sem 4